



# ArubaCloud

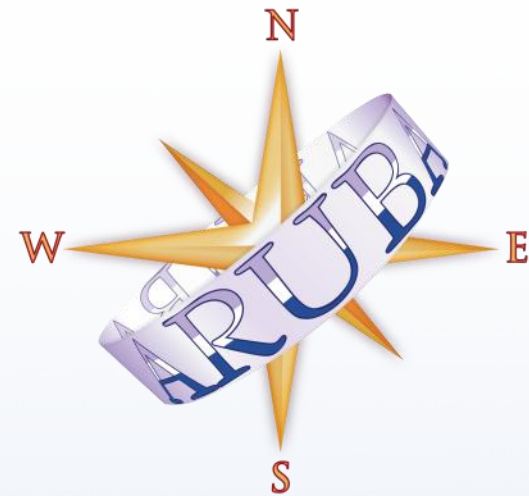
*The only Pan-European  
White label Cloud enabler*

Eric Sansonny  
WorldHostingDays 2013



# Aruba Group

- 2M customers
- 2M+ domain names
- 6M+ managed mailboxes
- 1.2M active sites
- 450 people
- 10k+ sq.m of datacenter



# Aruba presence



# IaaS solutions

## Cloud Computing

- Multi-Hypervisor
- Multi-datacenter
- 99.95% SLA
- Unlimited traffic
- Scheduling
- Free snapshots (VMw)
- Independent Resources fine-tuning
- Pay as you Go

## More to come:

- Managed services, Cloud BackUp, Shared storage, Cloud DNS, domains ...

## Cloud Object Storage

- RING structure
- Multi-country
- AWS S3 compatible API
- Unlimited requests
- Unlimited inbound traffic
- No file-size limit
- Self-healing technology
- Pay as you Go or Packages





# Technologies

## → Hypervisors



*\*Xen et KVM under consideration*

## → OS / Distros



## → Solutions



*\*Over 60 templates already available*

# Management interfaces

## Online Control Panel

The screenshot displays the Aruba Cloud Online Control Panel for a server named SHHA-01. The interface is divided into several sections:

- Hypervisor:** VMWare
- OS / Template:** CentOS 6.x 64bit
- CPU:** 2 Virtual CPU
- RAM:** 4 GB
- Hard Disk:** 10 GB
- Network Adapters:** Ethernet 01 (Connected)

The server status is **ON**. A message indicates: "The Cloud Server is switched on. To edit the resources, archive or delete the Cloud Server must be switched off." The server is currently **DISCONNECTED**.

**Actions:** SWITCH ON, SWITCH OFF, EDIT NAME, ARCHIVE, DELETE.

**Costs:**

Resource	Cost
Hypervisor: vmware vSphere	0.050 Euro / hr
CPU: 2 Virtual CPU	0.020 Euro / hr
RAM: 4 GB	0.003 Euro / hr
Disk Space: 10 GB	0.000 Euro / hr
OS/Template: CentOS 6.x 64bit	0.000 Euro / hr

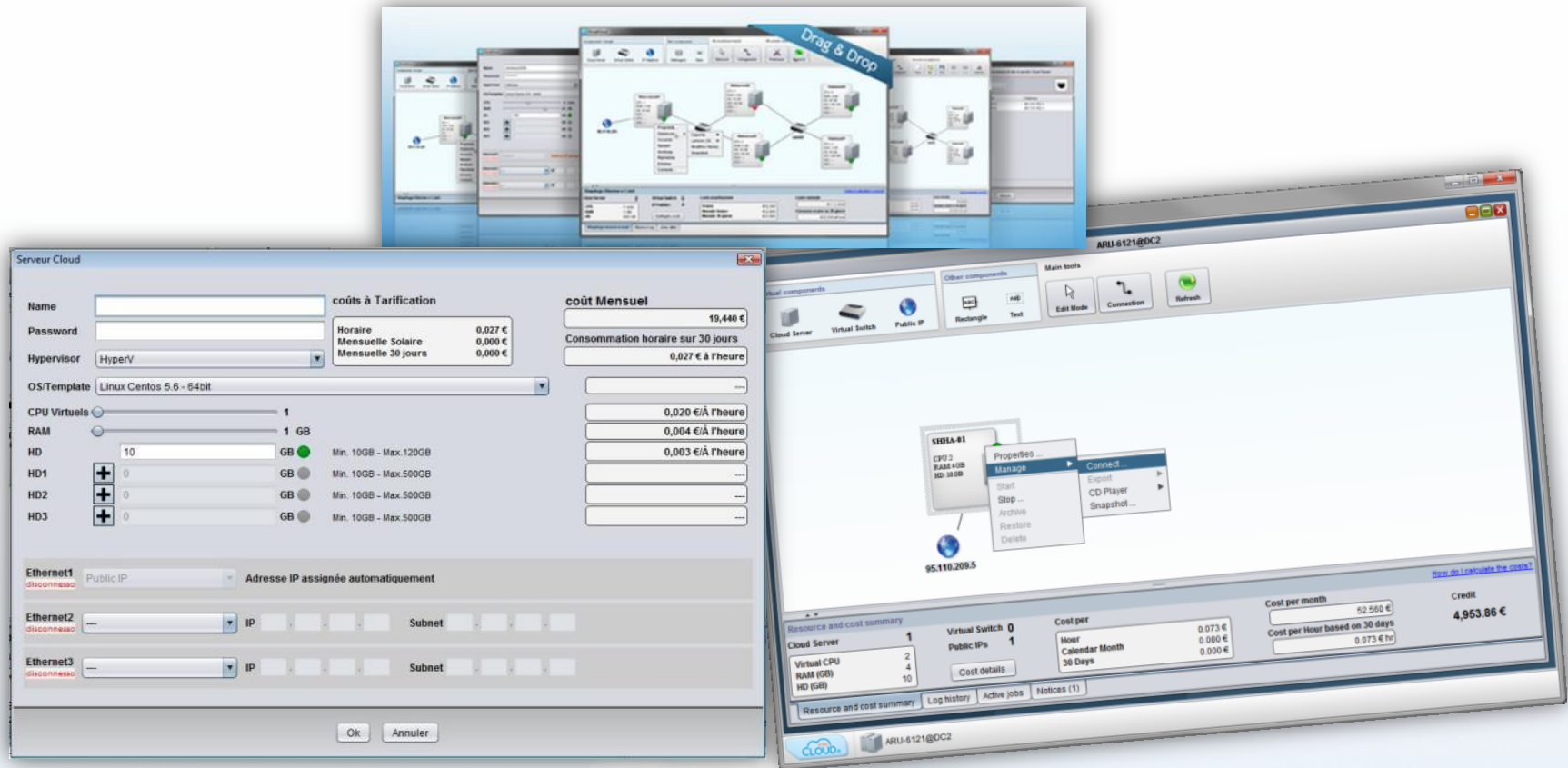
**Total Estimates:**

- Estimate per month: 52.56 Euro
- Cost Per 30 Days: 0.073 Euro

**Buttons:** Edit Cloud Server, Operations (Cloud Server Logs), Sign in (Use the Cloud Server), Details.

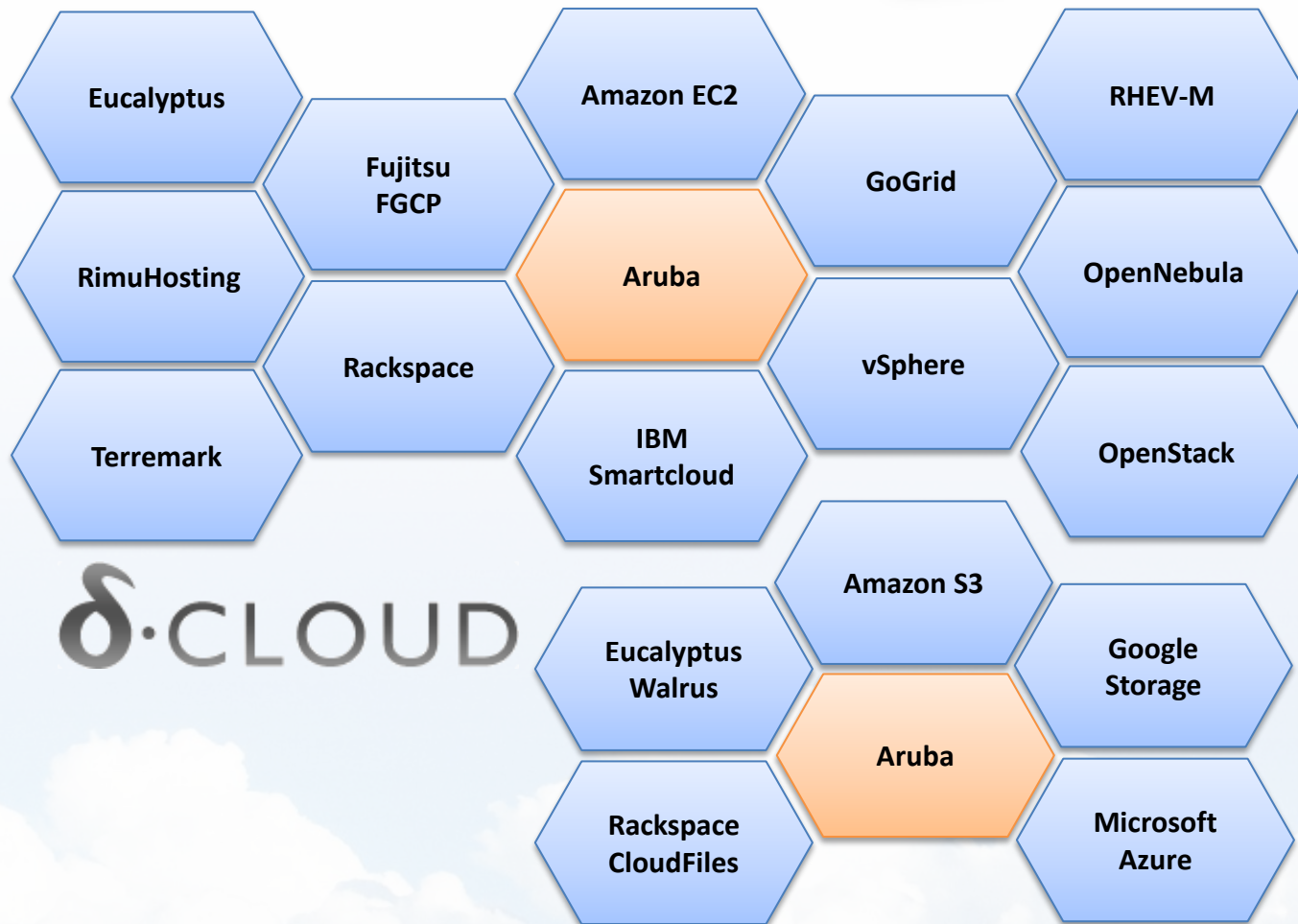
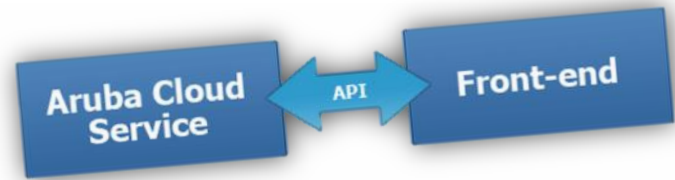
# Management interfaces

## Visual Cloud



# Management interfaces

## Public APIs and DeltaCloud integration



$\delta$ .CLOUD



# Management interfaces

## Additional Interfaces



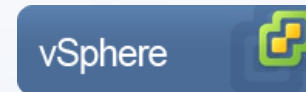
Mobile Apps



Extra Control: Virtual serial port



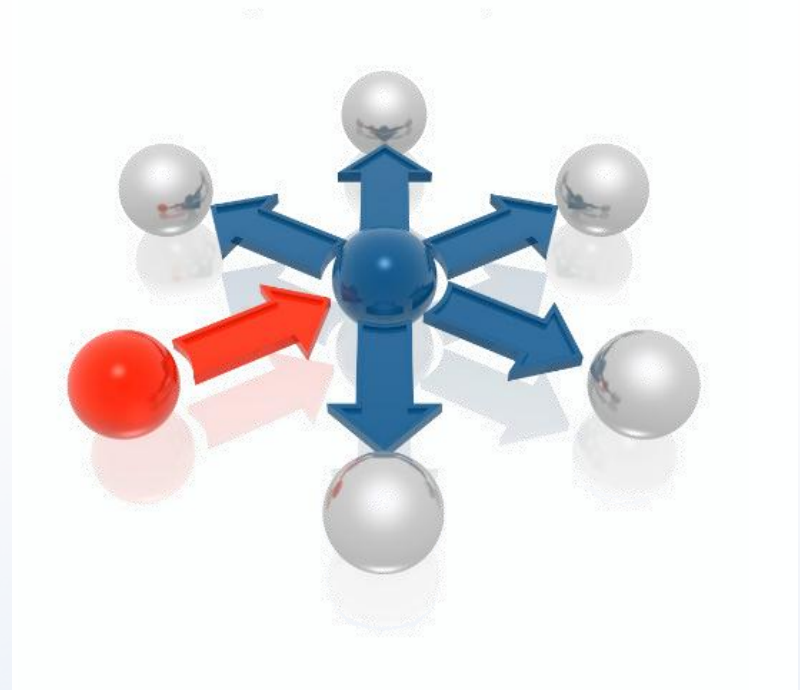
Connection clients



VMware vSphere Client

# Partner program

- Reselling Cloud Services
- 2 levels of white label
- Full interface customization
- Management of pricelists
- Management of products
- Management of customers' roles and permissions
- VisualCloud Partner
- Personalized templates





Thank you

